

Tella Tool & Manufacturing Company

Company Overview

<http://www.tellatool.com>



Tella Tool Overview – Who We Are

- Tella Tool & Manufacturing is a contract manufacturer of Precision Metal Stampings & Assemblies, Fabricating and C.N.C. Machining.
- Key supplier to various market segments including **Automotive**, **Aerospace**, **Industrial**, **Electronics** and **Defense** to name a few.
- Manufacturing operations are strategically located in Lombard, Illinois and Brownsville, Texas.
- Stamping capabilities & presses from 38-1000 tons.
- Consolidated employment of nearly 100 employees.
- All locations ISO9001:2000, TS16949:2002 and ISO14001:2004 Certified.

4 Decades of Growth & Success

- **1968** - Started a business in Melrose Park, Illinois building dies for Western Electric and International Harvester.
- **1970** - Began making fabricated components and expanded to a 4,000 sq. ft. facility in Stone Park, Illinois.
- **1972** - Expanded in a 10,000 sq.ft. facility in Addison, Illinois and began manufacturing stamped components in the growing telecommunications industry.
- **1977** – Relocated Tella Tool to a 25,000 sq. ft. facility in Lombard, Illinois while expanding into the computer industry.
- **1989** – Added 40,000 sq. ft. expansion as growth in the computer and telecommunications industries continued.
- **1994** - Expanded tool construction & Machining capacity. Relocated the tool shop from Ridge Ave. to Cortland Ave. into a 25,000 sq. ft. facility.
- **1996** - Diversified Tella Tool's industry portfolio and entered the Automotive industry.
- **2000** – Opened 50,000 sq. ft. facility in Brownsville, Texas to support customers along the border.
- **2008** – Added a new 1,000 ton Minster press in Brownsville to accommodate large product requirements along the border.

Today, Tella Tool & Manufacturing occupies 150,000 square feet in 4 plants with over 100 employees performing contract manufacturing for various industries through Metal Stampings, Fabrication Assembly and C.N.C Machining.

Our Vision

To be a leader in the metal forming industry and related services. We will earn our reputation and customer's loyalty through continuous improvement driven by the integrity, teamwork and innovation of the Tella Tool Employees.

Our Commitment

To Strive For:

- Process Improvement
- Highly Trained Workforce
- Reducing Costs
- Total Customer Satisfaction

Quality Policy

- Tella Tool shall provide **QUALITY** products all of the time
- Deliver products 100% **ON TIME** to our customers
- Immediately **RESPOND** to any customer request

*We shall achieve these goals by continually improving our processes and by focusing on **Training** and **Development** of our employees*





Environmentally Sound

Tella Tool & Manufacturing Co. is committed to maintaining an effective Environmental Management System designed to accomplish our objectives.

We shall:

- Comply with applicable legal requirements, and any other environmental commitments we make.
- Prevent Pollution.
- Continually improve our Environmental Management System.



ISO 14001:2004

Facility Profiles

ISO9001:2000, TS16949:2002, ISO14001:2004 Certified

Lombard, Illinois

- 16 miles SW from O'Hare International Airport.
- Stamping presses ranging from 38-600 tons
- 100,000 square feet and over 60 employees.
- Fabrication capabilities: Shearing, Punching, C.N.C. Machining, Laser, Press Brakes and Turret Punch Presses.
- Secondary operations: Drilling, Forming, Welding, Grinding, Polishing, Tapping, TOX, Staking, Assembly and Deburring.
- In-house Tool Design and Construction.



Brownsville, Texas

- Located 4 miles from Brownsville International Airport.
- 11 miles from Matamoros, Mexico border.
- Located in a NAFTA Free Trade Zone.
- Stamping presses ranging from 45-1,000 tons.
- 50,000 sq. ft. facility and over 25 employees.
- Secondary operations including Staking, Tapping, Cleaning and Assembly.



Manufacturing Capabilities – Metal Stampings

- Stamping presses from 38-1,000 tons.
- Utilizing various materials including but not limited to CRS, HSLA, Aluminum, Stainless Steel, Copper, etc.
- Stamping thickness capable from .008 to .312 thick.
- Secondary processes including Welding, Tapping, TOX, Staking, Deburring and Sub-Assembly.
- In-die fastener insertion systems incorporate the latest technologies and eliminate secondary operations, reducing cost & improving part quality.
- Vision technology including in-die sensing and measuring capabilities.



Sample Components – Metal Stampings



Market / Product Types

- Audio / Navigation
- Safety Restraints
- Window Regulators
- Seating Structures
- Outdoor Power Equip.
- Automotive Overhead Systems
- Household Appliance
- Shields and Brackets
- Cases and Covers
- Terminals and Connectors
- Levers and Arms

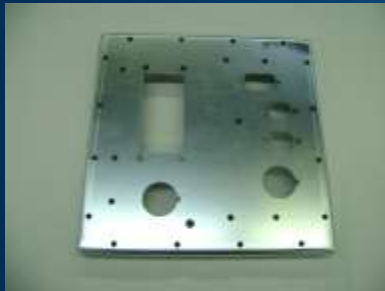
Presses ranging from 38-1,000 tons specializing in progressive dies and secondary tools producing various materials

Manufacturing Capabilities - Fabrication

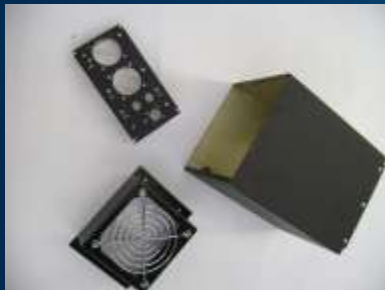
- Eight CNC Turret presses with a 2,600 watt laser to ensure precise cutting and punching while minimizing tooling expenses.
- Press brakes ranging from 20-180 tons, utilizing CNC controls and multiple access back gauges.
- Secondary operations including Mig & Tig Welding, Spot Welding, Tapping, Polishing and Hardware Insertion.
- Assembly of both mechanical & electro-mechanical units.



Sample Components – Fabrication & Assembly



**Shearing & Punching
Forming & Welding
Grinding & Polishing
Assembly**



**Laser Equipment
Turret Punch Presses
CNC Presses
Press Brakes**



2,600 watt laser machine, Turrets, Press Brakes, Welding (Mig / Tig) and complete assembly of components to yield a finished product.

Manufacturing Capabilities – C.N.C. Machining

- Products range from Aerospace components to Medical Equipment.
- Nine C.N.C. vertical & horizontal machining centers and two C.N.C. lathes offer the capacity and versatility needed to produce the most precise products from intricate designs.
- Various materials from mild steel to aluminum, producing to tight tolerance specifications.
- Capable of machining extrusions, castings and forgings to meet customer specific requirements.
- Utilizing software from AutoCAD and Mastercam to Pro Engineer.

From intricate turnings to vertical or horizontal machined parts, our full service Machining Division can accommodate all of your needs!



Sample Components – CNC Machining



CNC Vertical & Horizontal Machining Centers – CNC Lathes & Turning Centers



From intricate turnings to vertical or horizontal machined parts our full service Machining Division can accommodate your needs!

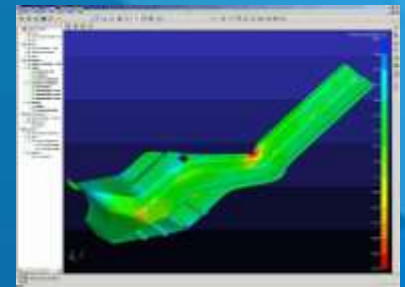
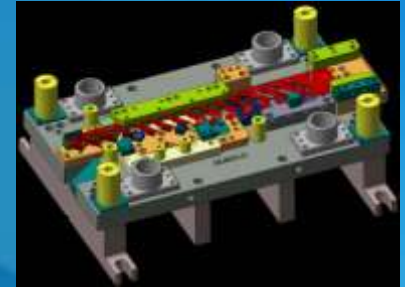
Quality Commitment

- Monitor key performance indicators & use data to drive performance.
- Drive Layered Process Audits (LPA) from top to bottom to continuously verify process conformance.
- Improve discipline and communication throughout the entire organization.
- Challenge our suppliers continuous improvement process and strengthen supplier performance.
- Continue 5S and lean manufacturing principles at all levels.
- Perform systemic root cause analysis approach to all non-conformances.
- Maintain a ZERO DEFECT mentality and a CONTINUOUS IMPROVEMENT approach throughout the entire Tella Tool organization.



Engineering Support / Tool Design & Construction

- Utilizing software including Solidworks, Catia, Pro-E and AutoCad, Tella Tool offers in house design and full engineering support.
- Early engineering involvement assisting customers with cost effective design solutions.
- Fast Form Analysis to predict formability, strain direction, advanced springback analysis and formability analysis.
- Flexibility of utilizing both internal and external tool design and construction resources.
- Prototype capabilities for advanced engineering.
- Extensive program management to ensure flawless launch and meet customer readiness expectations.





Forward Focus Thinking

- Hire the best talent and support continued growth of our customers and the organization.
- Become the leaders in integrated technology, software, equipment and services.
- Merge the capabilities of Tella Tool with our customers applications to deliver a value that includes consistent quality, impeccable service at a cost that is competitive in the global marketplace.
- Join forces with our customers and become a “One Stop” service provider.
- Continuously improve the environmental performance of our operation by integrating sound environmental practices into our business.

Summary

- Over 40 years of metal forming experience providing an extensive range of custom manufacturing capabilities and value-add services including Stamping, Fabricating, C.N.C.Machining and Assembly.
- Servicing key markets including but not limited to Automotive, Aerospace, Electronics, Industrial and Defense.
- In-house tool design and construction capabilities.
- Related secondary operations that include Drilling, Forming, Welding, Polishing, Tapping, TOX, Staking, Cleaning and Deburring.
- Early engineering involvement for prototyping, product development, tool design and construction and extensive project management for flawless launch results.
- Strategic locations in Lombard, IL and Brownsville, TX.
- Top level commitment to Quality & Continuous Improvement and a workforce dedicated to **TOTAL CUSTOMER SATISFACTION**